

Table: Deposits and repos of non MFIs in MFIs in Greece (excluding the Bank of Greece, flows during the period, in millions of euro, 01/2009 - 04/2016)

	01/2009	02/2009	03/2009	04/2009	05/2009	06/2009	07/2009	08/2009	09/2009	10/2009	11/2009	12/2009	01/2010	02/2010	03/2010	04/2010	05/2010	06/2010	07/2010	08/2010	09/2010	10/2010	11/2010	12/2010
Domestic Residents	-1,037	753	3,756	4,035	-712	5,841	-4,336	2,047	2,339	-2,880	-970	2,464	-5,326	-2,986	-2,081	-5,872	-1,197	-2,096	-4,819	-326	7,098	-4,063	-3,666	1,231
General government	-37	-137	1,488	345	-65	599	-1,362	116	559	-838	30	-586	-194	771	-58	-611	2,661	1,445	-1,484	-537	6,016	-2,849	-301	472
Corporations and households	-1,001	890	2,268	3,690	-647	5,242	-2,974	1,931	1,780	-2,042	-1,000	3,050	-5,132	-3,758	-2,023	-5,261	-3,858	-3,540	-3,335	212	1,082	-1,214	-3,365	758
Other Euro area residents	-109	-126	-168	-20	-33	203	-56	-23	51	285	-234	112	-84	14	-112	-3	-91	234	-77	-36	-7	69	-43	-12
Non-Euro area residents	-2,690	-1,672	-964	-195	-1,176	-2,629	-289	1,155	529	-8	-448	-1,694	-1,085	1,486	-71	-2,711	-2,503	-2,781	-486	-1,148	-884	660	-922	-517
Total of deposits and repos	-3,837	-1,045	2,624	3,819	-1,921	3,415	-4,681	3,179	2,920	-2,603	-1,652	881	-6,495	-1,485	-2,265	-8,585	-3,791	-4,643	-5,382	-1,510	6,207	-3,334	-4,632	701
	01/2011	02/2011	03/2011	04/2011	05/2011	06/2011	07/2011	08/2011	09/2011	10/2011	11/2011	12/2011	01/2012	02/2012	03/2012	04/2012	05/2012	06/2012	07/2012	08/2012	09/2012	10/2012	11/2012	12/2012
Domestic Residents	-2,709	-1,151	125	-4,807	-12,420	-3,502	7,481	-6,649	-7,752	-7,600	-2,225	819	-4,454	-4,832	1,133	844	-9,582	-7,581	3,097	-339	2,076	606	739	9,099
General government	975	1,250	3,429	-2,964	-7,129	184	8,709	-8,238	-1,463	-1,261	1,848	-79	747	-406	-92	702	-390	-893	51	-98	924	-390	64	3,346
Corporations and households	-3,684	-2,401	-3,304	-1,843	-5,291	-3,686	-1,227	1,589	-6,289	-6,339	-4,073	898	-5,201	-4,426	1,225	142	-9,192	-6,688	3,046	-241	1,152	996	675	5,753
Other Euro area residents	26	5	-48	18	-81	32	-170	-82	111	53	-52	-160	-89	-3	28	-57	107	42	45	-3	-4	-2	35	218
Non-Euro area residents	662	-69	1,570	-1,036	-1,666	-1,654	457	337	-990	-234	-169	-1,740	724	-1,350	-1,853	703	-436	-565	388	186	-873	252	284	-252
Total of deposits and repos	-2,021	-1,216	1,647	-5,825	-14,167	-5,123	7,768	-6,395	-8,631	-7,781	-2,445	-1,081	-3,818	-6,185	-692	1,490	-9,911	-8,104	3,530	-156	1,199	857	1,057	9,065

Table: Deposits and repos of non MFIs in MFIs in Greece (excluding the Bank of Greece, flows during the period, in millions of euro, 01/2009 - 12/2012)

	01 /2013	02 /2013	03 /2013	04 /2013	05 /2013	06 /2013	07 /2013	08 /2013	09 /2013	10 /2013	11 /2013	12 /2013	01 /2014	02 /2014	03 /2014	04 /2014	05 /2014	06 /2014	07 /2014	08 /2014	09 /2014	10 /2014	11 /2014	12 /2014
Domestic Residents	3,593	2,964	661	-4,941	566	-205	2,062	1,240	-336	-1,156	-273	-249	-2,550	126	1,784	216	-2,066	3,021	1,367	-694	-238	-325	-643	-4,850
General government	3,759	274	746	-3,360	-481	487	2,223	1,453	382	-527	-667	-2,603	-157	443	1,313	-194	-2,624	2,077	1,379	-1,586	-358	-94	-421	-653
Corporations and households	-166	2,690	-85	-1,582	1,046	-693	-161	-212	-719	-630	394	2,354	-2,392	-318	472	411	558	944	-12	892	120	-231	-222	-4,197
Other Euro area residents	-244	47	-44	-28	-115	102	1	8	-39	52	2	-46	70	-3	-77	6	10	11	22	-4	33	-36	77	-75
Non-Euro area residents	-416	-1,532	-979	131	444	-1,395	34	-51	-434	-10	74	97	-674	-587	254	574	-264	1,187	235	17	-663	28	89	-436
Total of deposits and repos	2,933	1,478	-362	-4,838	895	-1,499	2,097	1,198	-809	-1,114	-197	-198	-3,153	-464	1,961	797	-2,320	4,219	1,624	-681	-868	-334	-477	-5,361

	01 /2015	02 /2015	03 /2015	04 /2015	05 /2015	06 /2015	07 /2015	08 /2015	09 /2015	10 /2015	11 /2015	12 /2015	01 /2016	02 /2016	03 /2016	04 /2016
Domestic Residents	-13,460	-7,924	-3,665	-6,046	-4,274	-7,991	-1,564	461	1,160	-930	757	3,275	-1,511	-513	-176	-1,077
General government	-674	-289	-1,476	-1,388	-409	-410	-54	12	598	-249	1,147	622	-394	35	-231	-1,037
Corporations and households	-12,786	-7,635	-2,189	-4,658	-3,865	-7,581	-1,509	449	561	-681	-390	2,653	-1,118	-548	55	-40
Other Euro area residents	270	-9	-148	-50	14	-196	-241	67	23	16	17	115	29	-145	-78	451
Non-Euro area residents	-551	-220	-323	-132	24	-2,378	326	-17	-180	24	-2,980	-601	-148	179	-281	-117
Total of deposits and repos	-13,742	-8,153	-4,135	-6,229	-4,237	-10,566	-1,478	511	1,004	-890	-2,206	2,789	-1,631	-479	-535	-742

Source: Bank of Greece

Figure: Total of deposits and repos (changes, Greece, millions of euro)

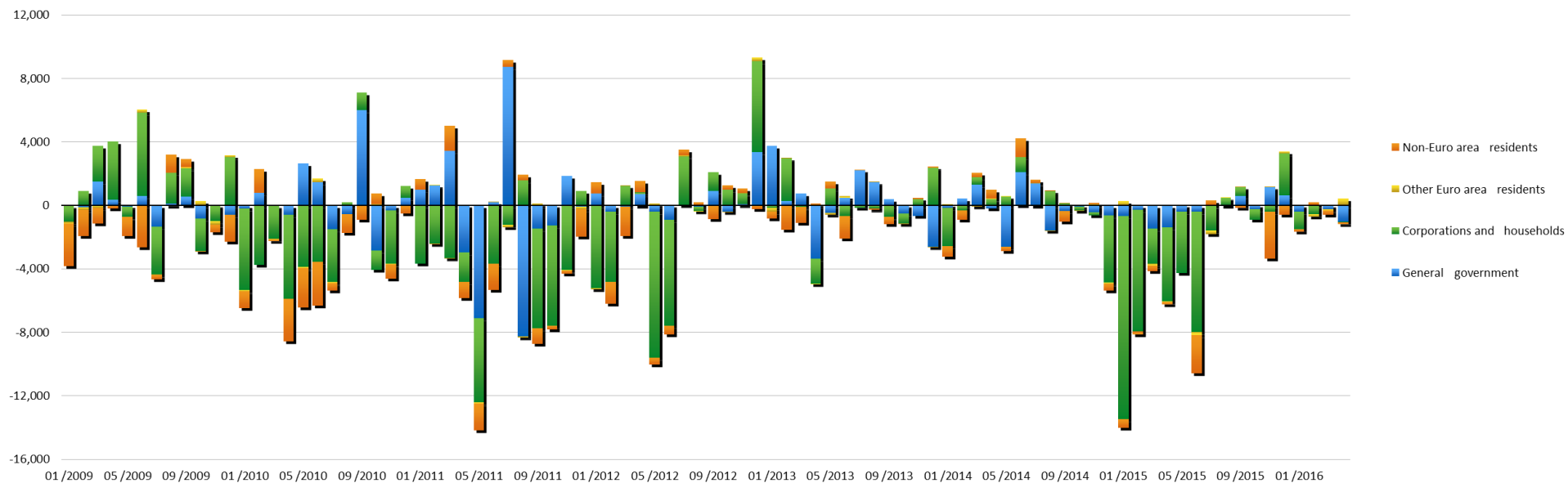


Figure: Total of deposits and repos (changes, Greece, millions of euro)

